

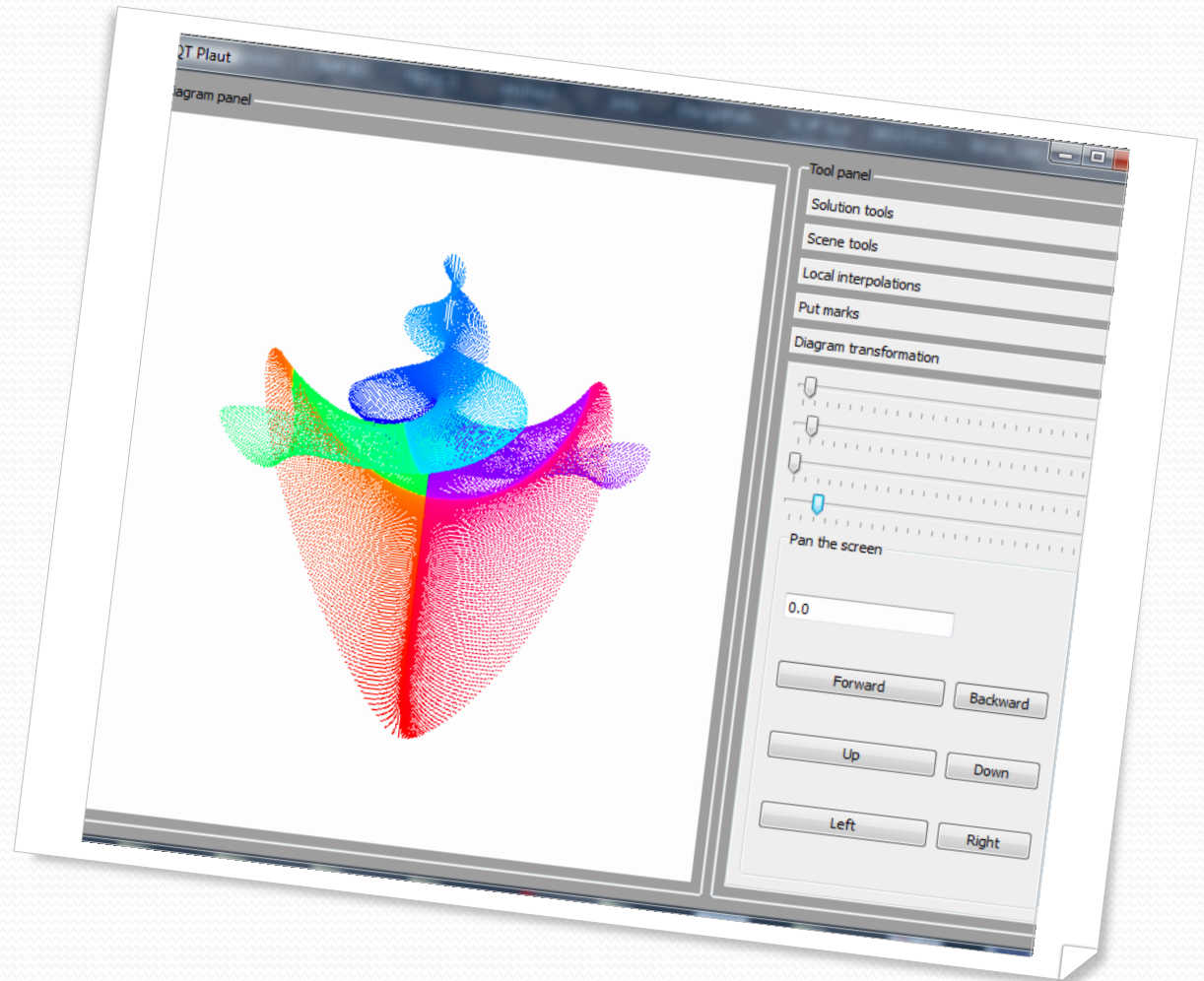
Android Development

Zhikai Wang

Feb 1, 2011 www.heteroclinic.net

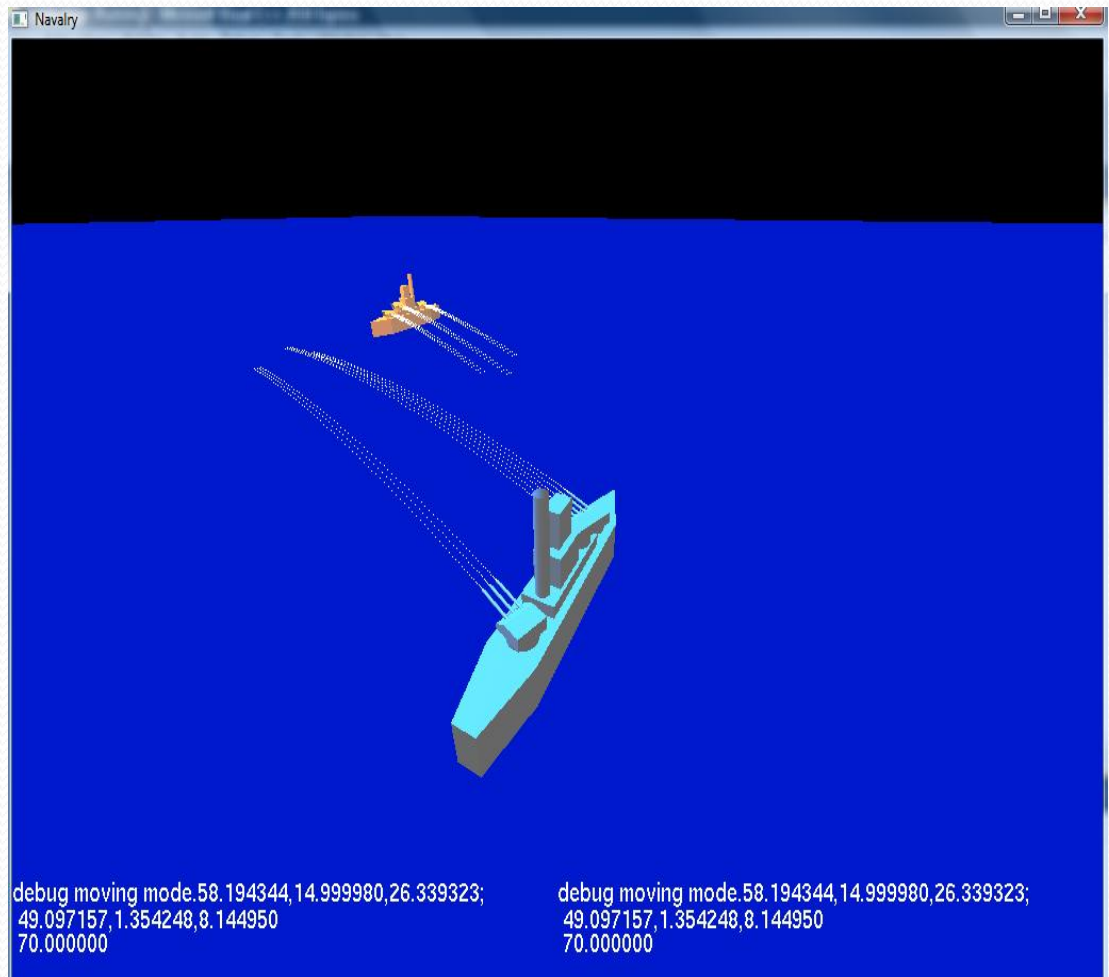
Former Projects QtPlaut

- C++
- Open source GUI framework QT
- OpenGL
- Scientific computation
- Visualization of manifold
- Process data more than 4Giga -bytes, under Linux
- 64-bit C++ compiler



Former Project Battleship

- C++ OpenGL
- 3D Transformation Algorithm
- Being ported to mobile device
- Problem: OpenGL ES needs a 3D transformation wrapper for Java
For example, glGetFloatv() etc.



Android Development Kits

- Android Simulator
- Eclipse IDE
- Android SDK

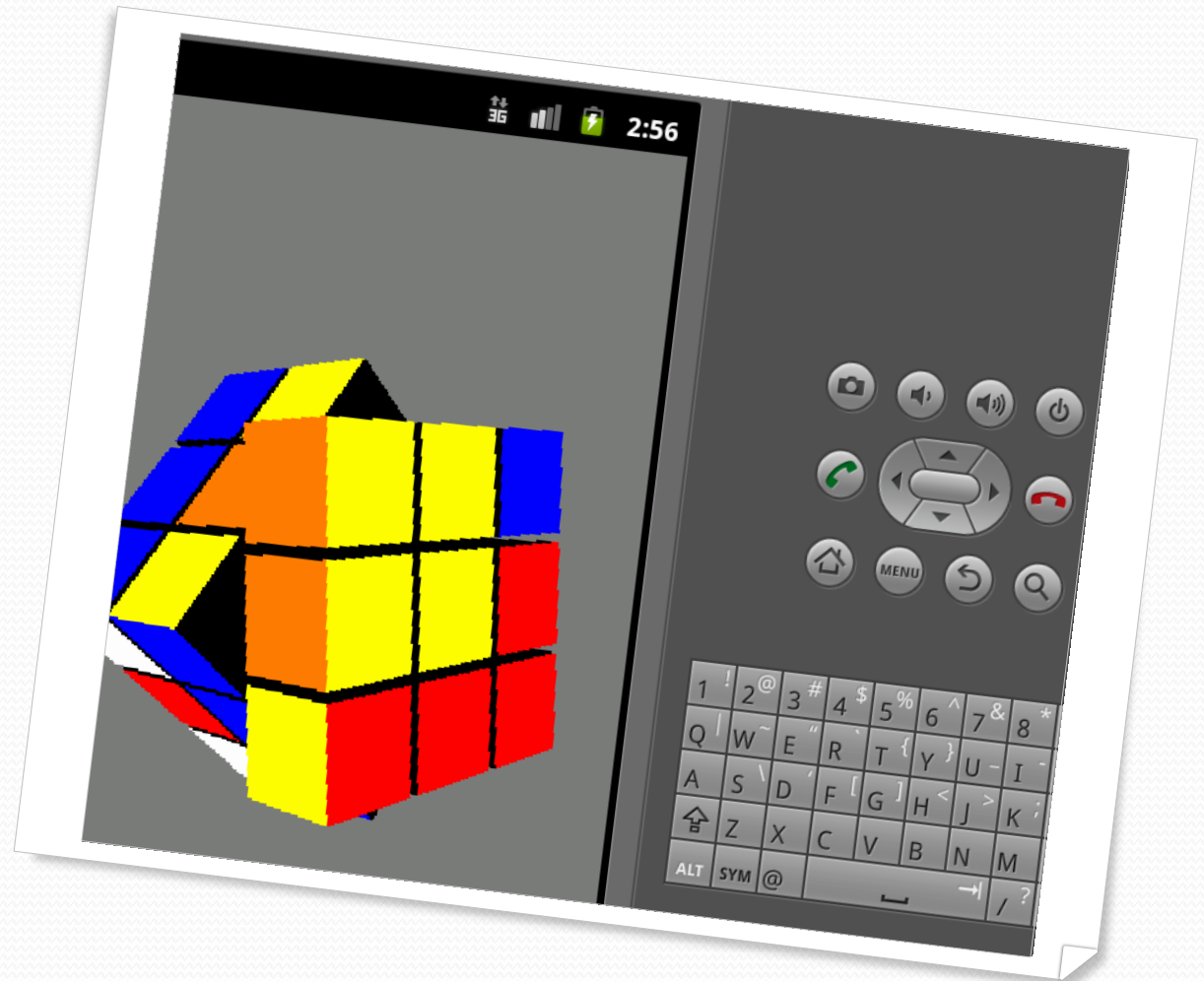
Run An Android Demo Application from Eclipse IDE

Android OpenGL es

Android simulator

Eclipse project TestCube

Exercise.1. build a stand-alone Eclipse project using the Kube demo? Tip do some trouble-shooting with Java classpath.



Facebook API for Android Example Original- login

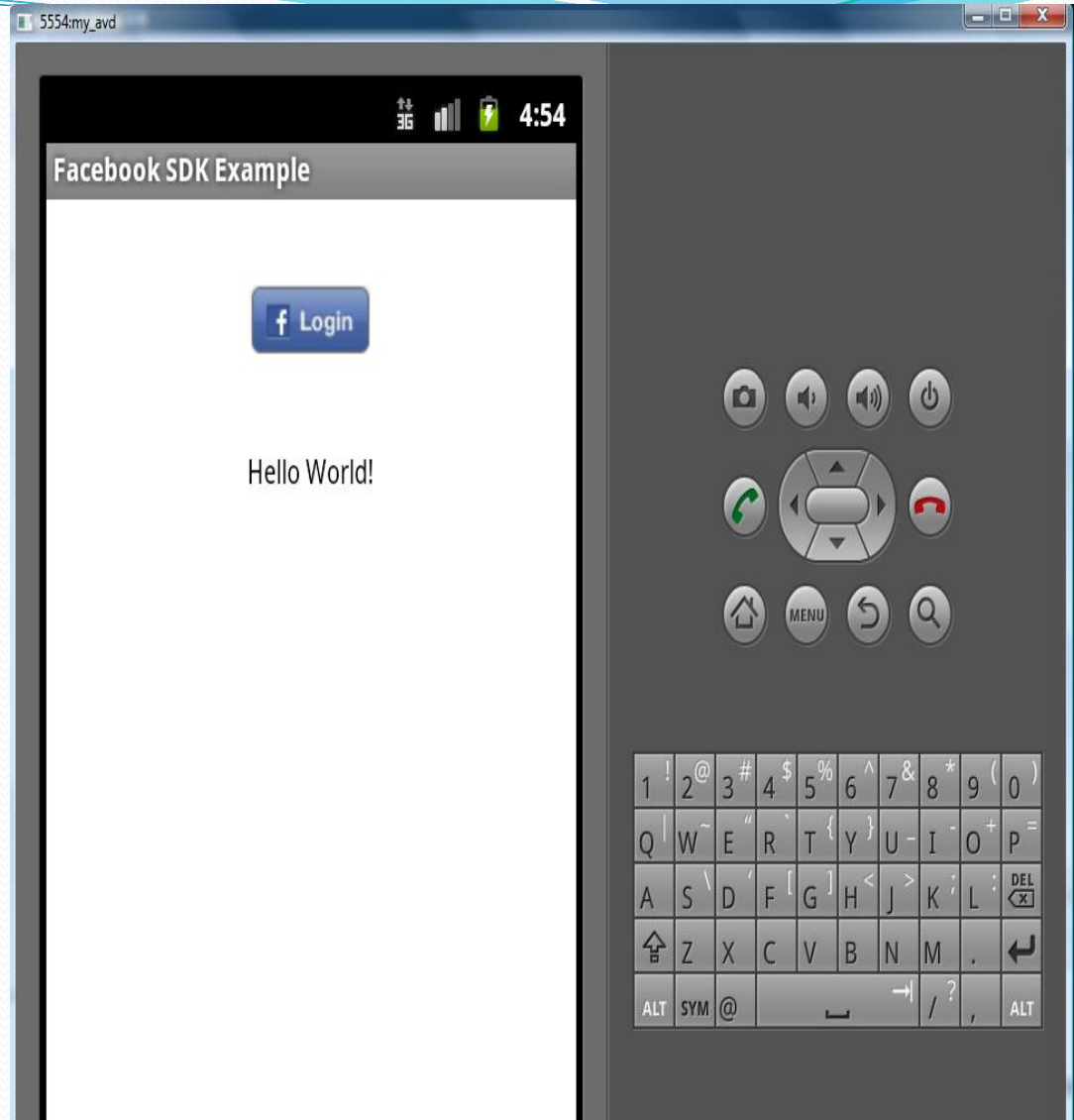
Use Facebook from an Android application rather from the browser

Facebook demo project

Compile the application, upload the application, run the application from Eclipse IDE

Eclipse project Example

Tip: If you are using MS-Windows you can use Cygwin's git to get the Official Facebook SDK for Android.



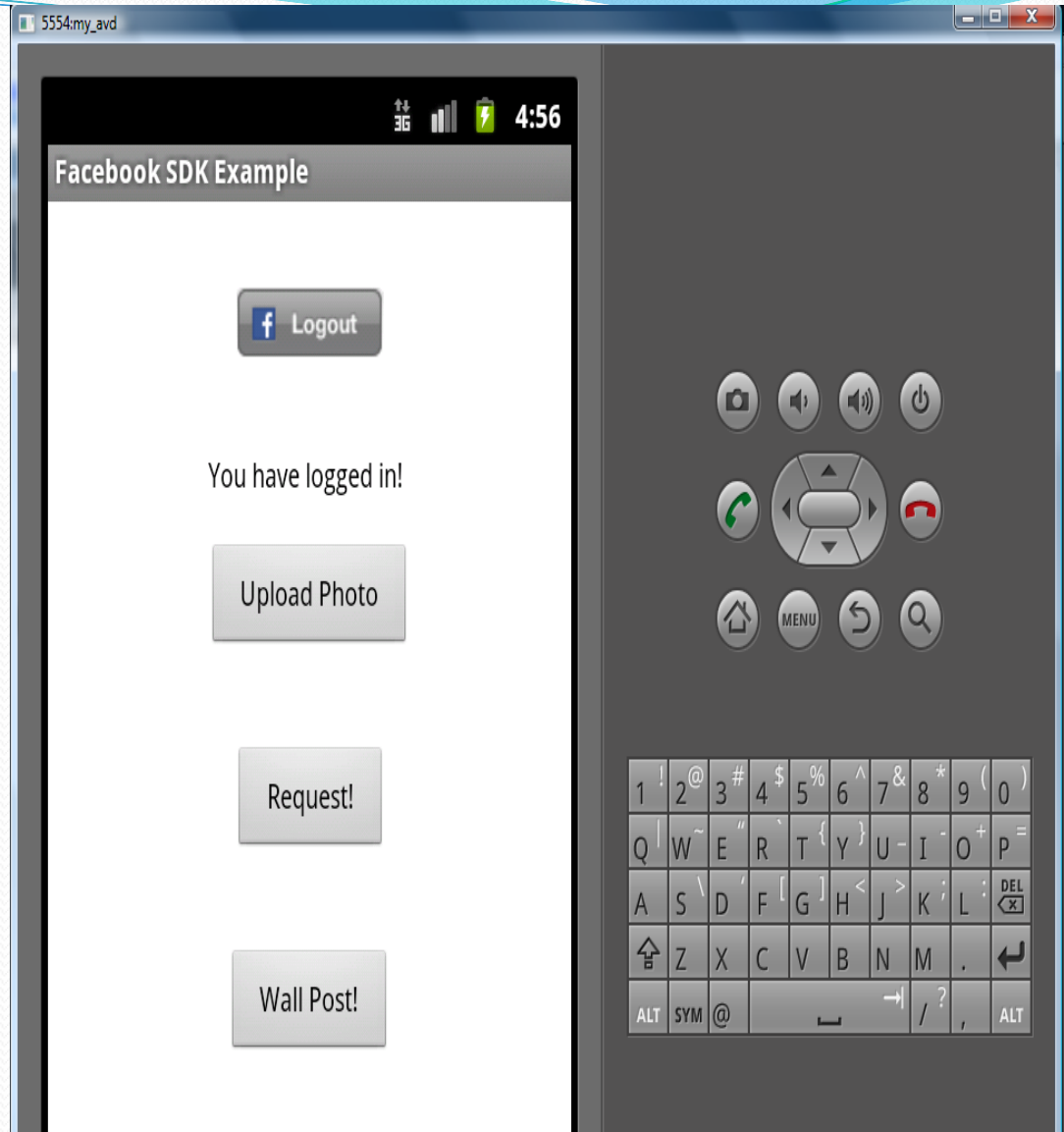
Facebook API for Android Example Original- controls

Use Facebook from an Android application rather from the browser

Facebook demo project 'simple'

Compile the application, upload the application, run the application from Eclipse IDE

Eclipse project Example

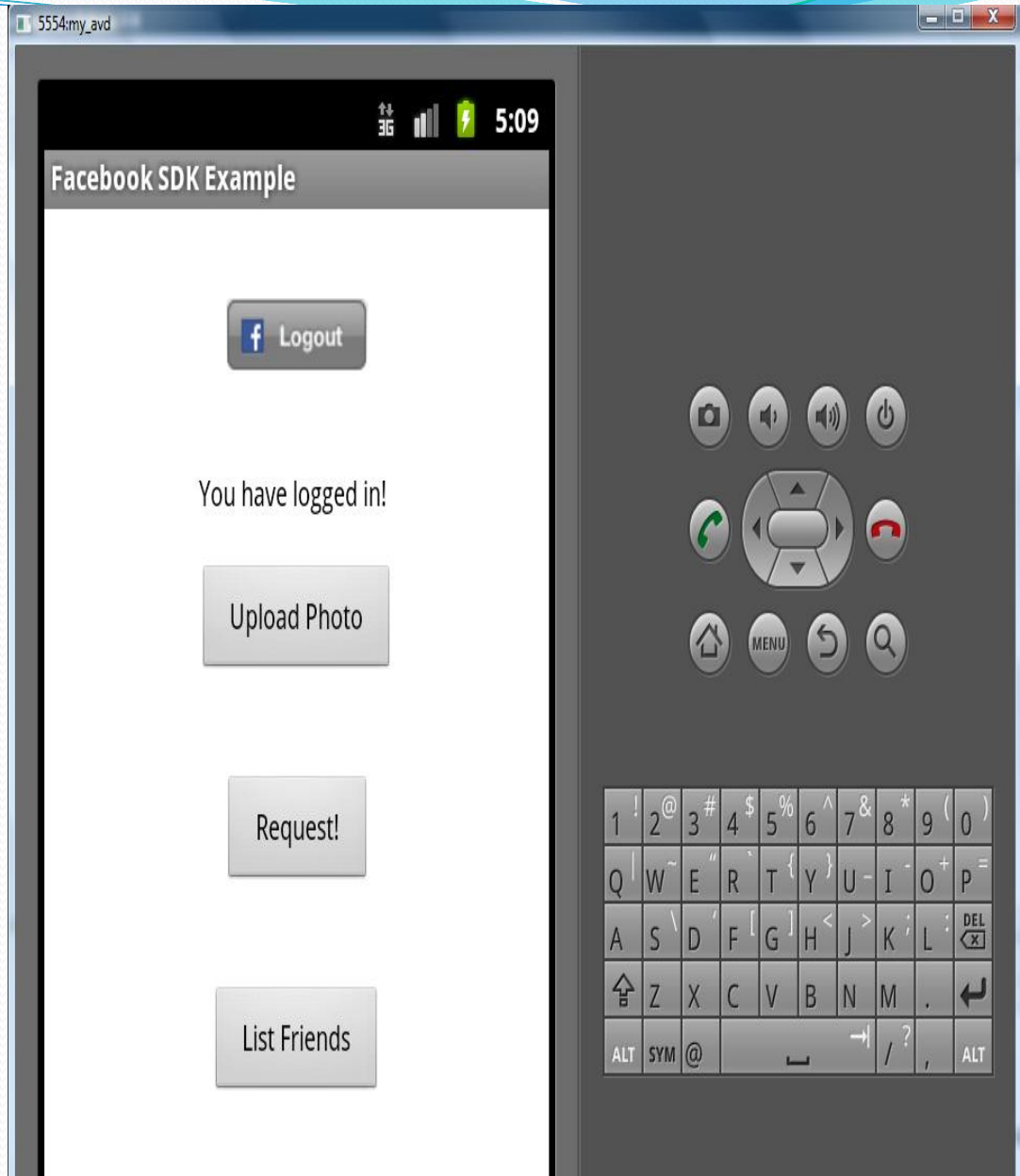


Facebook API for Android Example Exercise

Exercise.2.

Add one more button to the 'simple' project of the SDK. List all the friends of the current logged in user.

Tips: the answer Java file is attached. Facebook API. Do some trouble-shooting with the xml files in the simple project.



Facebook API for Android Example Project

List all friends not only their names, but also show their profile pictures as icons. Organize the icons properly.

The real names are blurred.



Thanks!

You can reach me by visiting www.heteroclinic.net